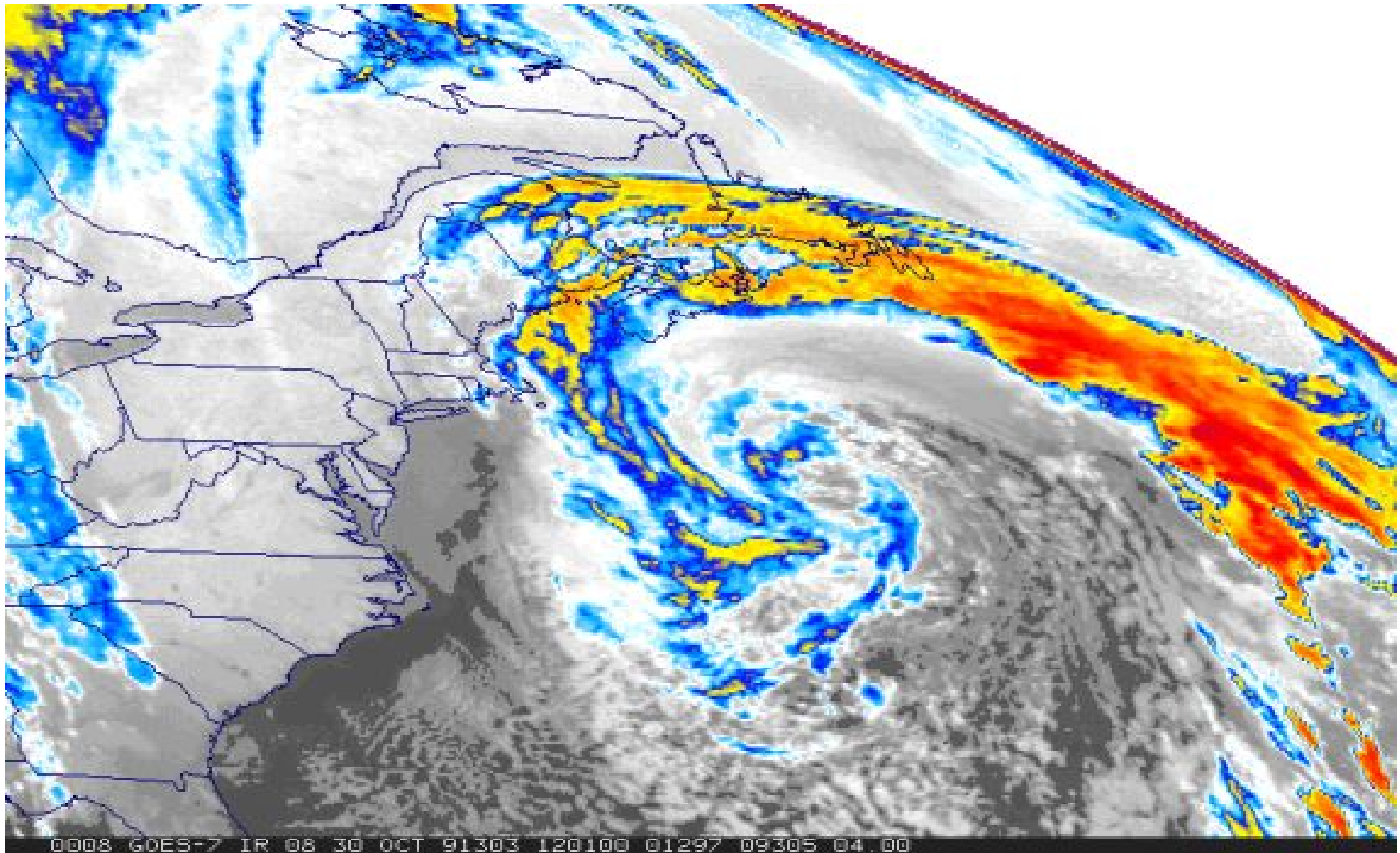


Depressions



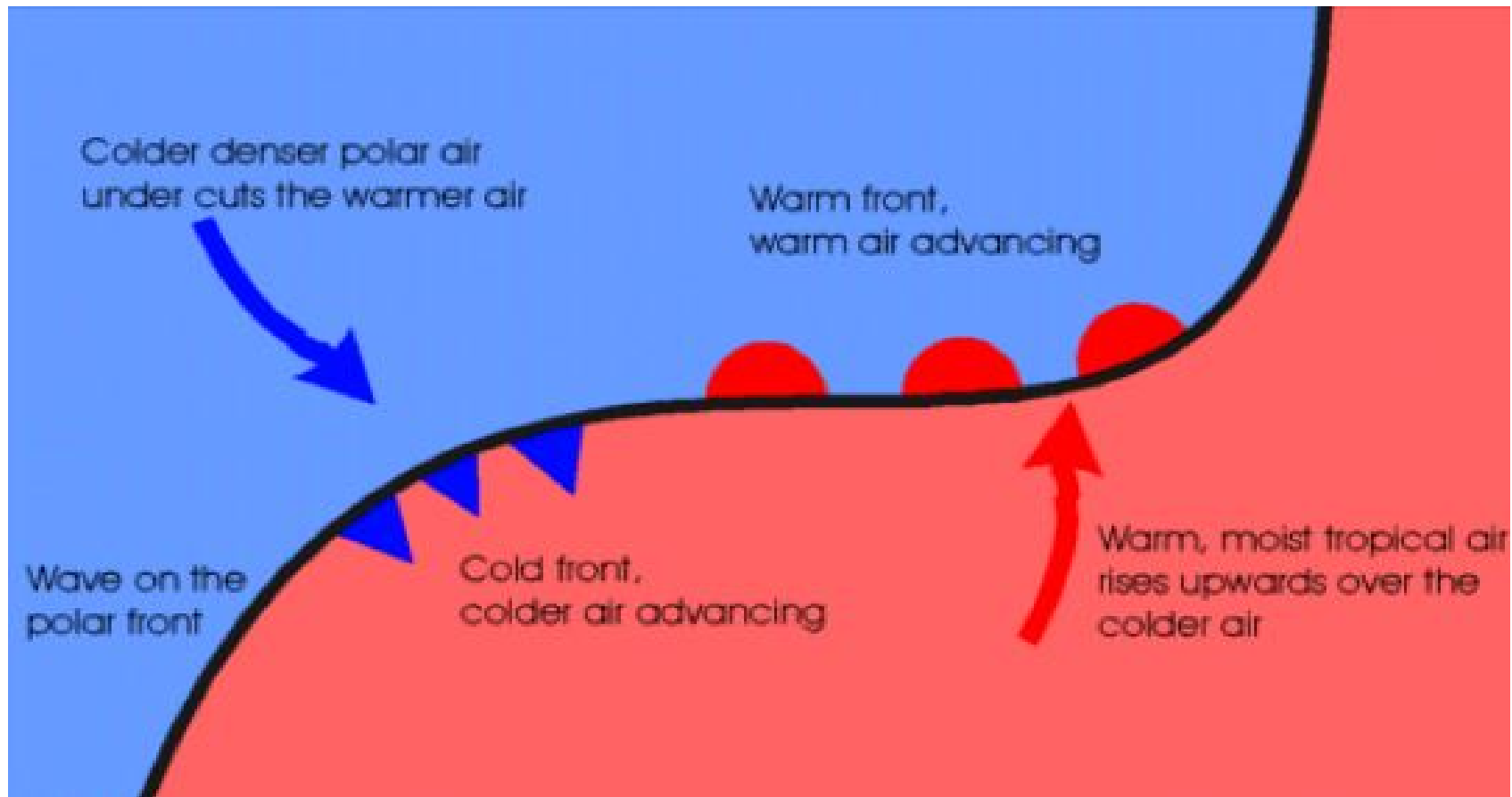
John Harris - Head of Geography - Radley College - UK

mjh@radley.org.uk

<http://atschool.eduweb.co.uk/radgeog/>

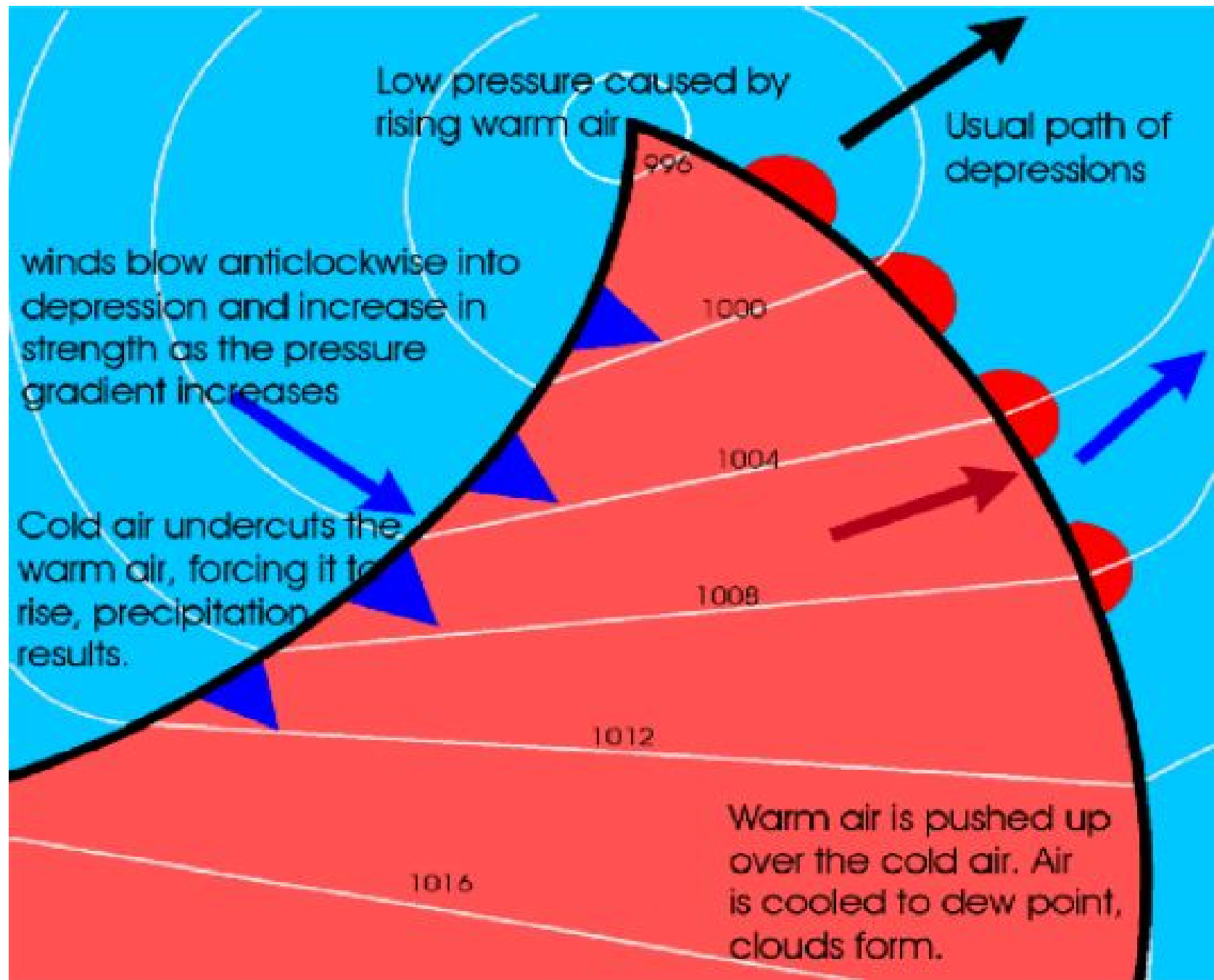
Depression stage 1

Depressions form where a **warm** air mass eg Tropical Maritime meets a **cold** air mass eg Polar Maritime

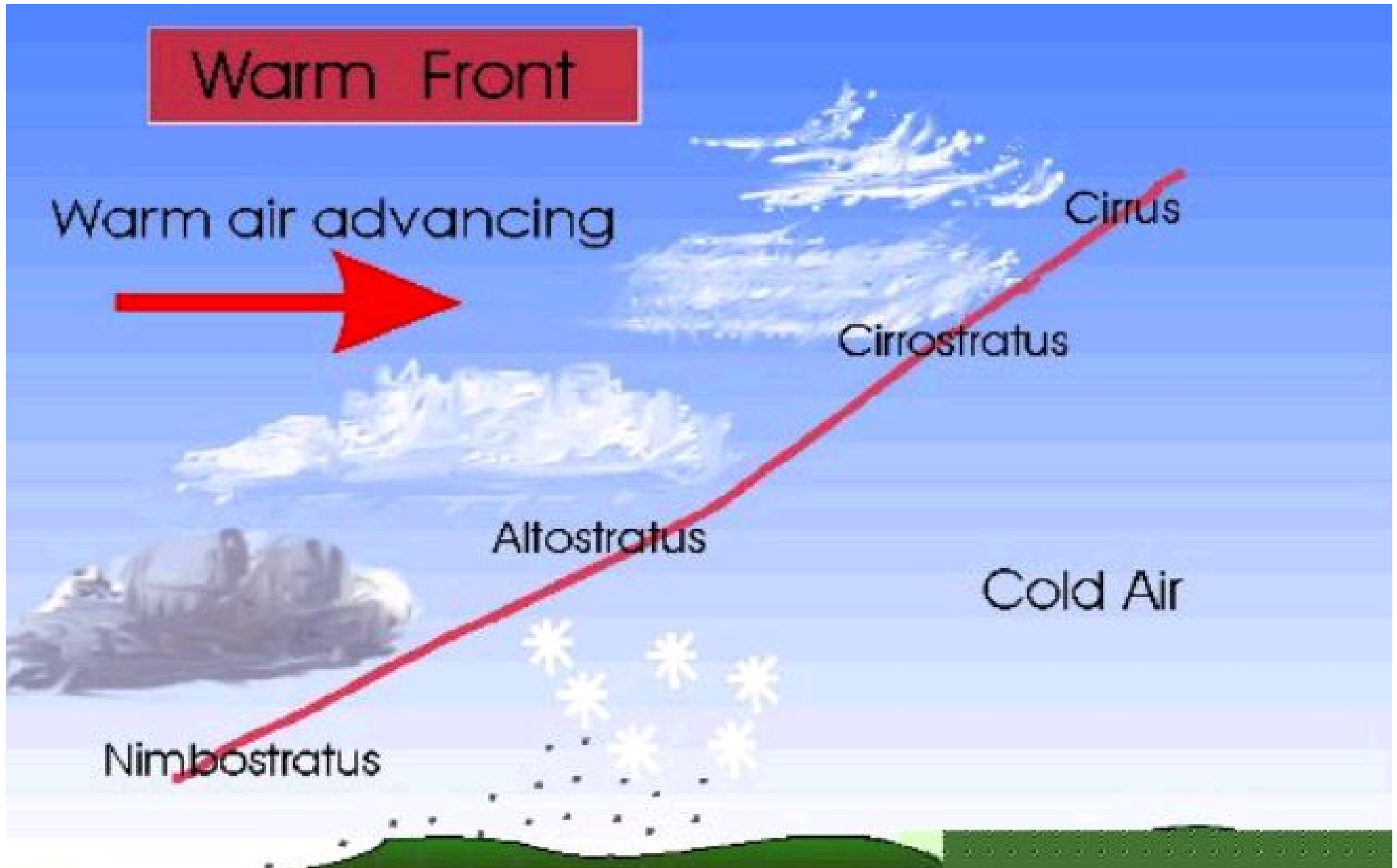


Depression stage 2 : maturity

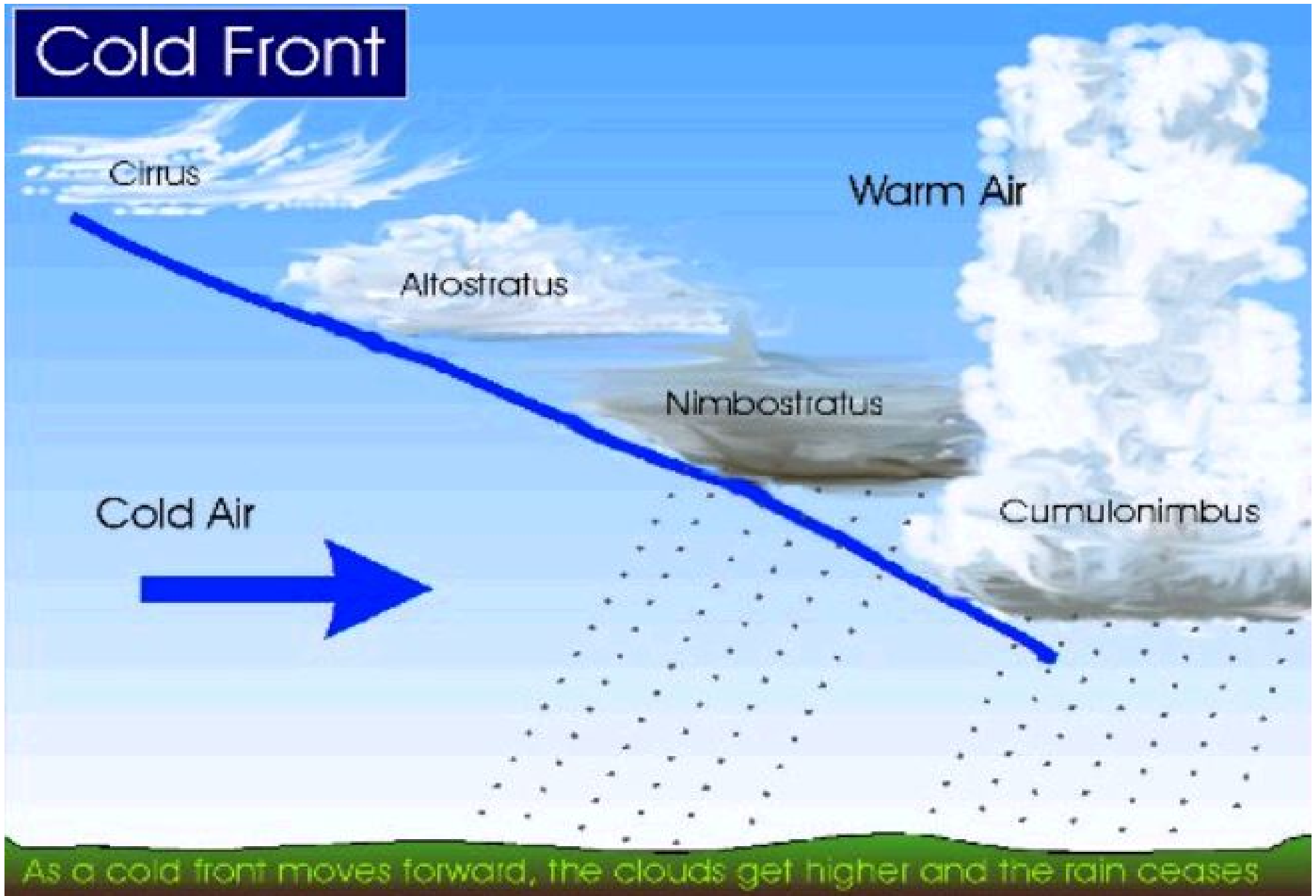
Rain often occurs along the **warm** and **cold** fronts where air rises, expands, cools and condenses



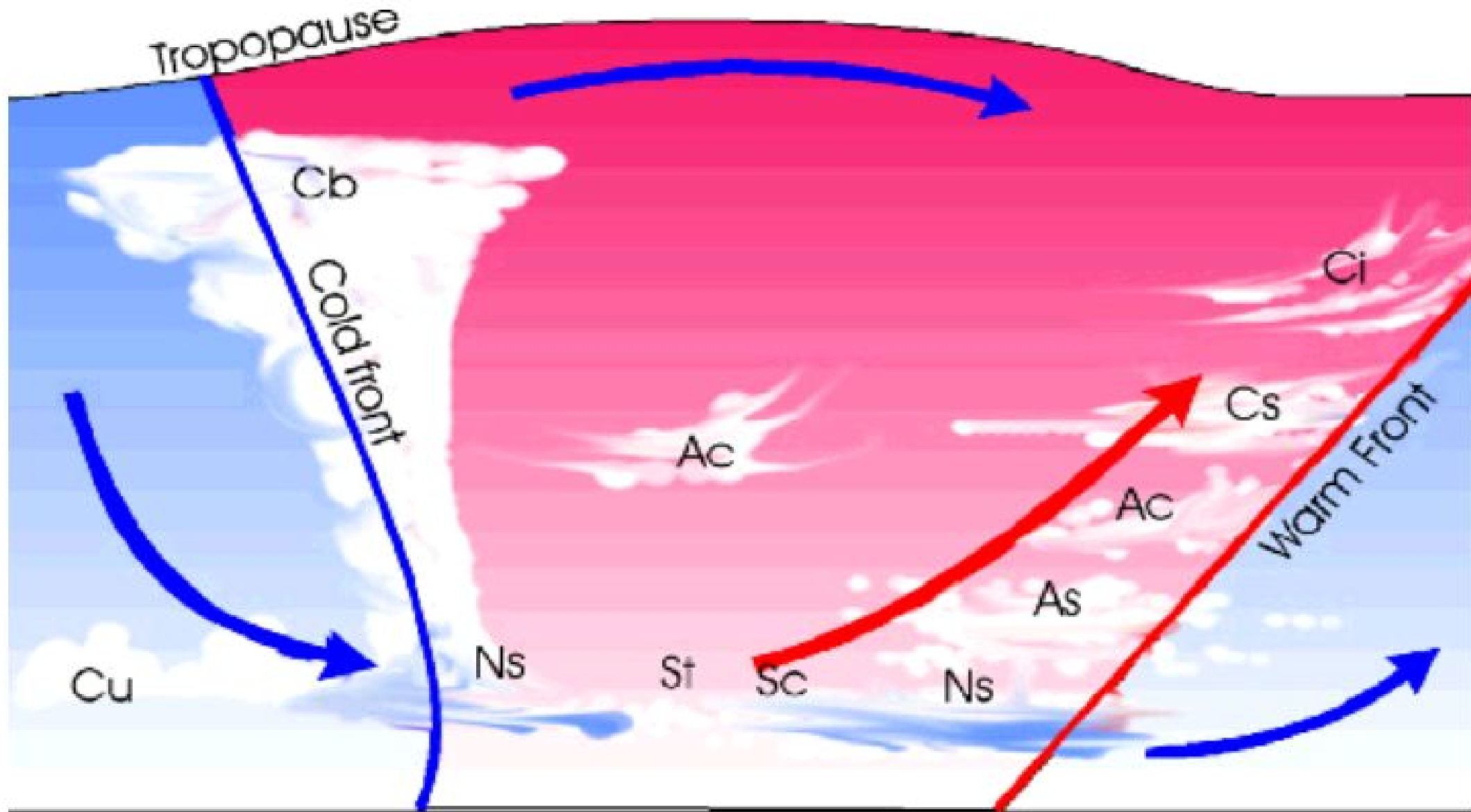
Warm front



Cold front

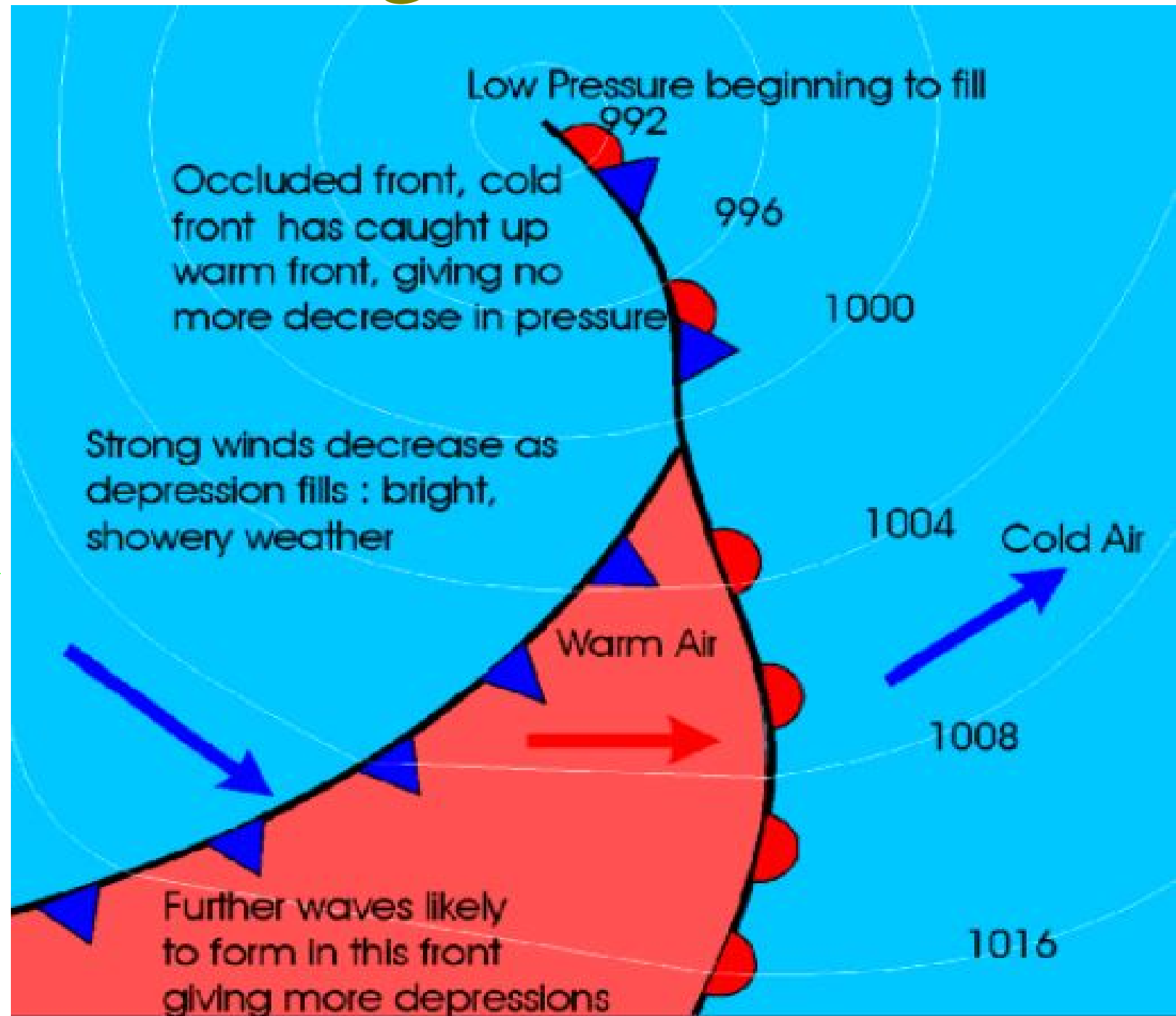


Depression - cross section



Depression stage 3 : occlusion

The **cold** front eventually catches up the slower moving **warm** front to form an **occluded** front.



Occluded front - cross-section

